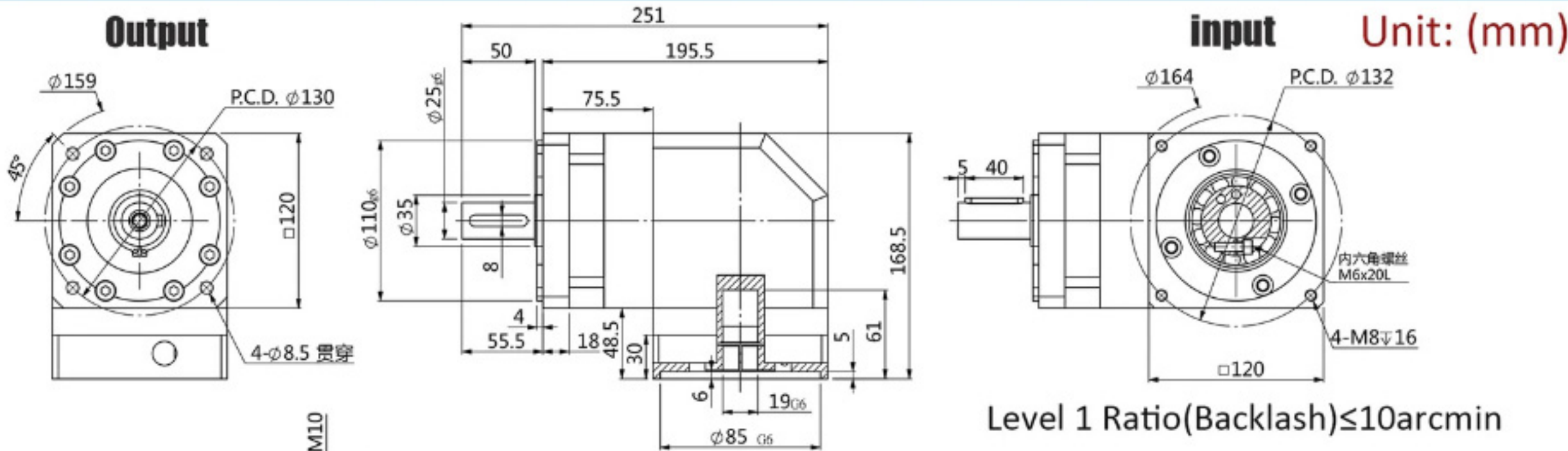


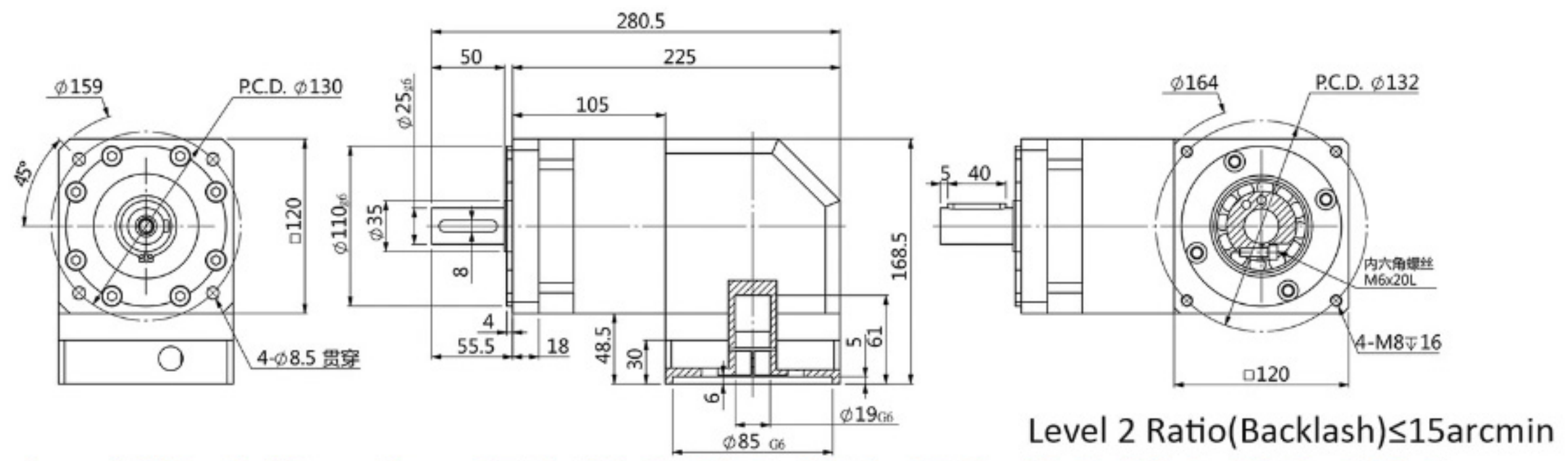
# PVF120 Series Nema42 Right Angle Planetary Gearbox

PVF120 Gear Reducer Technical Parameters		
Technical Parameter	Unit	Value
Max Radial Torque	N	1240
Max Axial Torque	N	1100
Torsional Stiffness	Nm/arcmin	11
Max Input Speed	rpm	6000
Rated Input Speed	rpm	3500
Noise	dB	≤65
Backlash (Stage 1)	arcmin	≤10
Backlash (Stage 2)	arcmin	≤15
Max. Output Torque	Nm	1.5 Times Rated Output Torque
Instant Braking Torque	Nm	2 Times Rated Output Torque
Life time	h	20000
IP Degree	-	IP65
Operating Temperature	°C	-10°C~+90°C
Full Load Efficiency	%	L1≥95%, L2≥92%
Rated Output Torque (Nm)		
Stage	Ratio	Rated Output Torque
Stage 1 (L1)	3:01	161
	4:01	210
	5:01	210
Stage 2 (L2)	15:01	161
	20:01	210
	25:01:00	210
	30:01:00	161
	35:01:00	210
	40:01:00	210
	50:01:00	210
70:01:00	170	
100:01:00	86	
Moment of Inertia (Kg.cm <sup>2</sup> )		
Stage	Ratio	Moment of Inertia
Stage 1 (L1)	3:01	12.78
	4:01	12.78
	5:01	12.78
	7:01	11.38
Stage 2 (L2)	15:01	12.18
	20:01	12.18
	25:01:00	12.18
	30:01:00	12.18
	35:01:00	12.18
	40:01:00	12.18
	50:01:00	11.48
	70:01:00	11.48
100:01:00	11.48	

# Straight Gear Right Angle Planetary Reducer for Nema42 stepper motor 19mm shaft



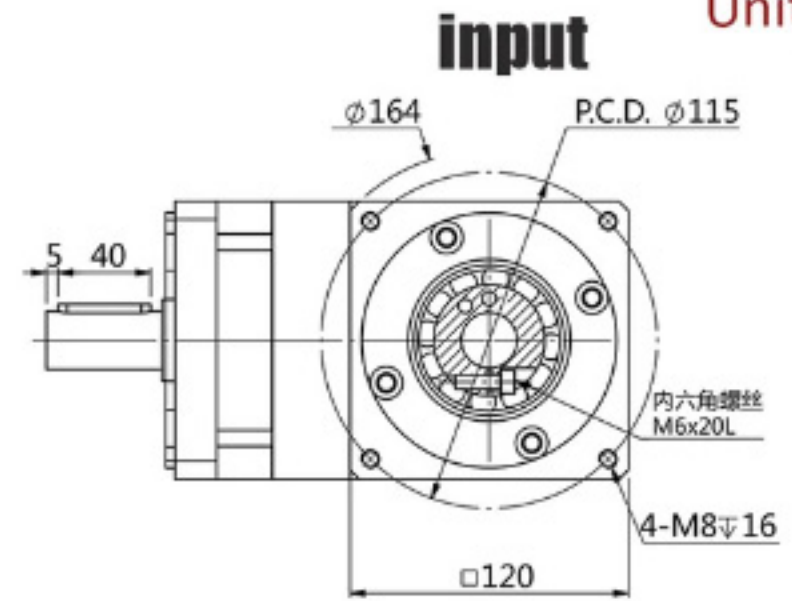
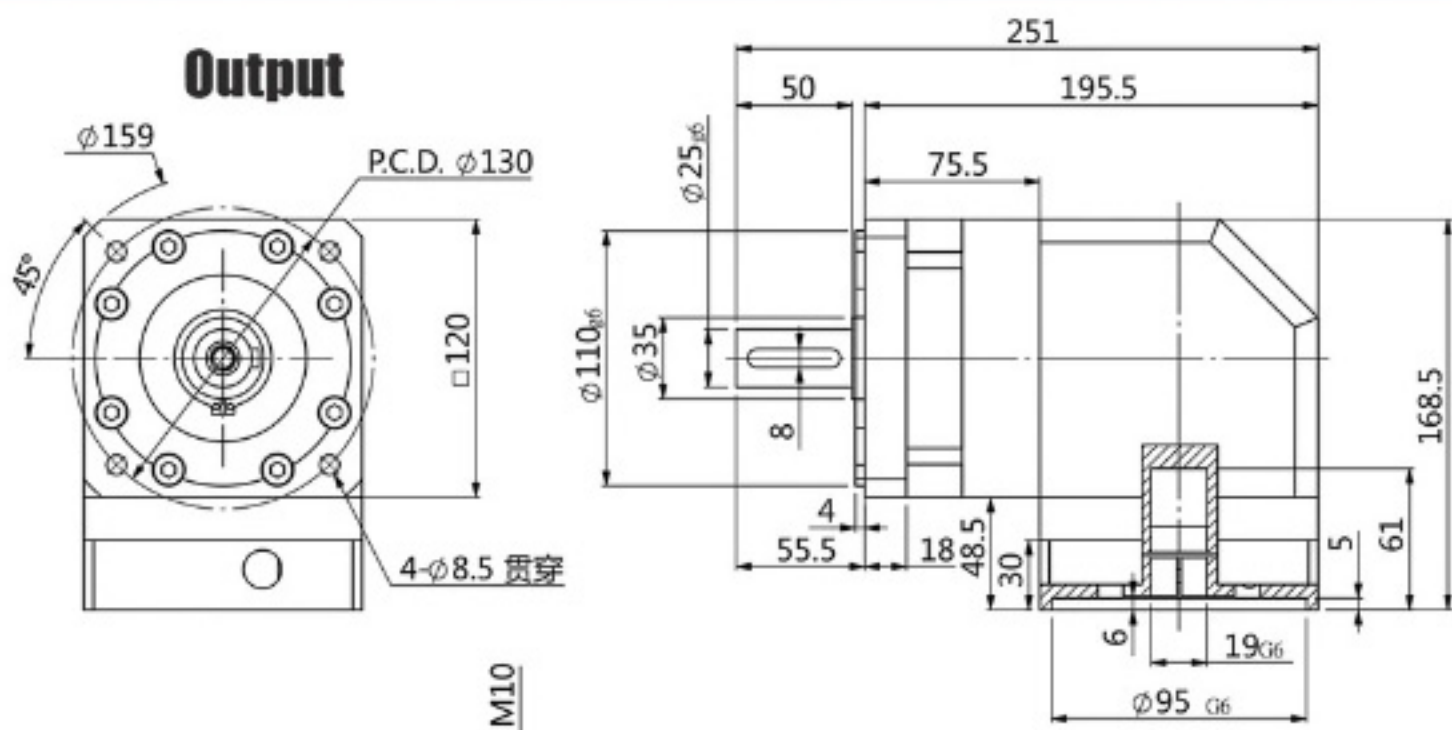
**Level 1 (Ratio) Drawing: 3:1; 4:1; 5:1; 7:1; 10:1**



**Level 2 (Ratio) Drawing: 15:1; 20:1; 25:1; 30:1; 35:1; 40:1; 50:1; 70:1; 100:1**

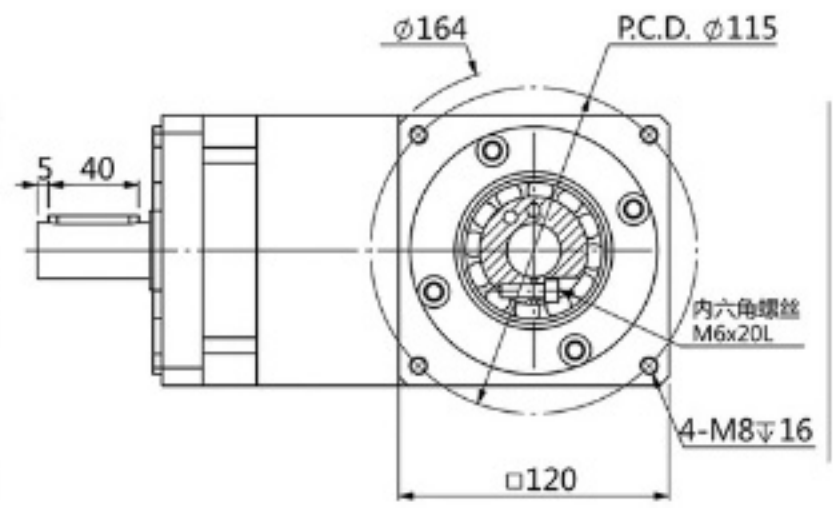
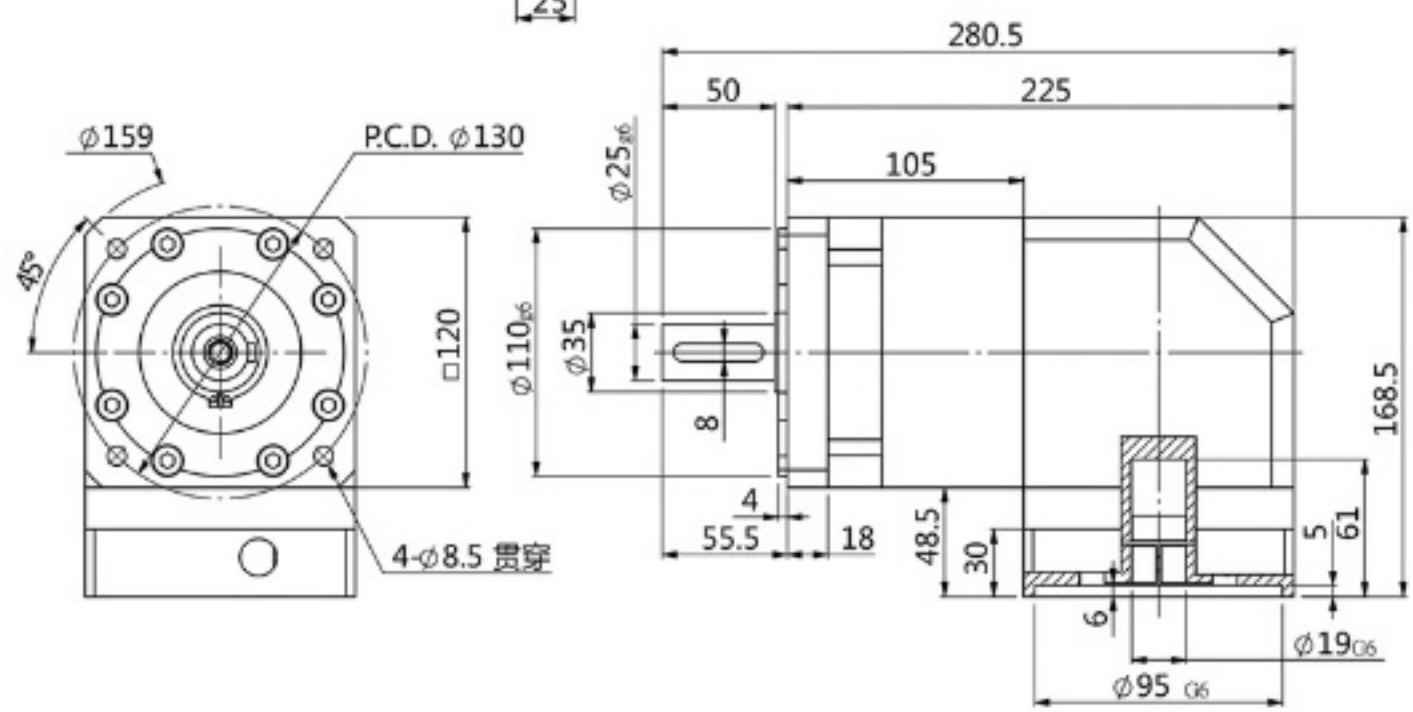
# Straight Gear Right Angle Planetary Reducer for 100mm servo motor 19mm shaft

Unit: (mm)



Level 1 Ratio(Backlash) ≤ 10 arcmin

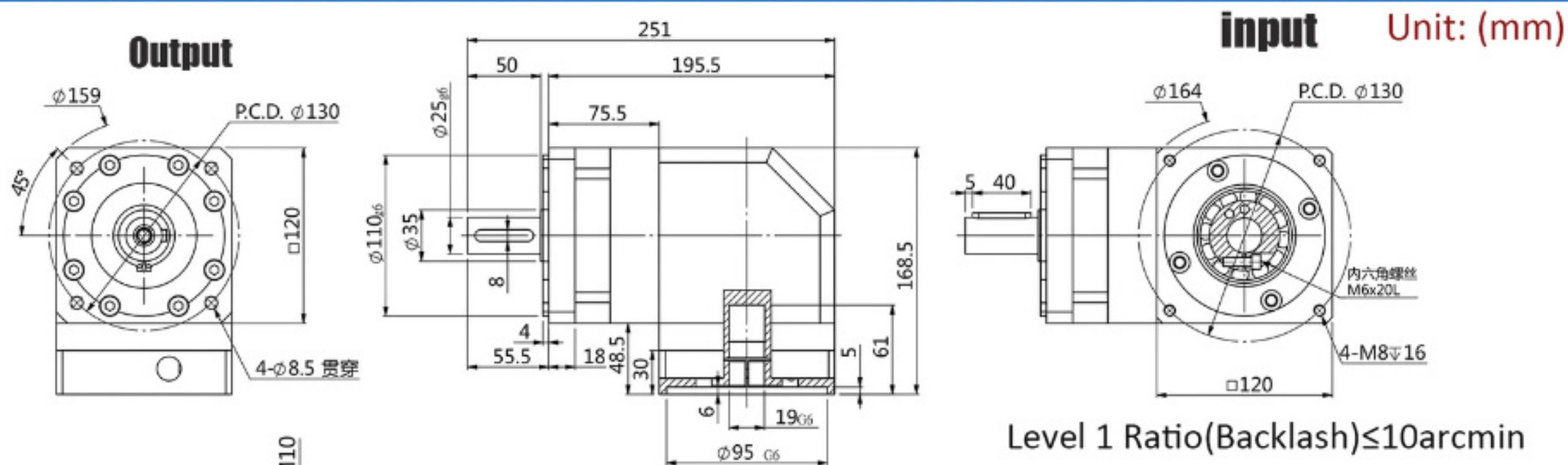
**Level 1(Ratio)Drawing: 3:1; 4:1; 5:1; 7:1; 10:1**



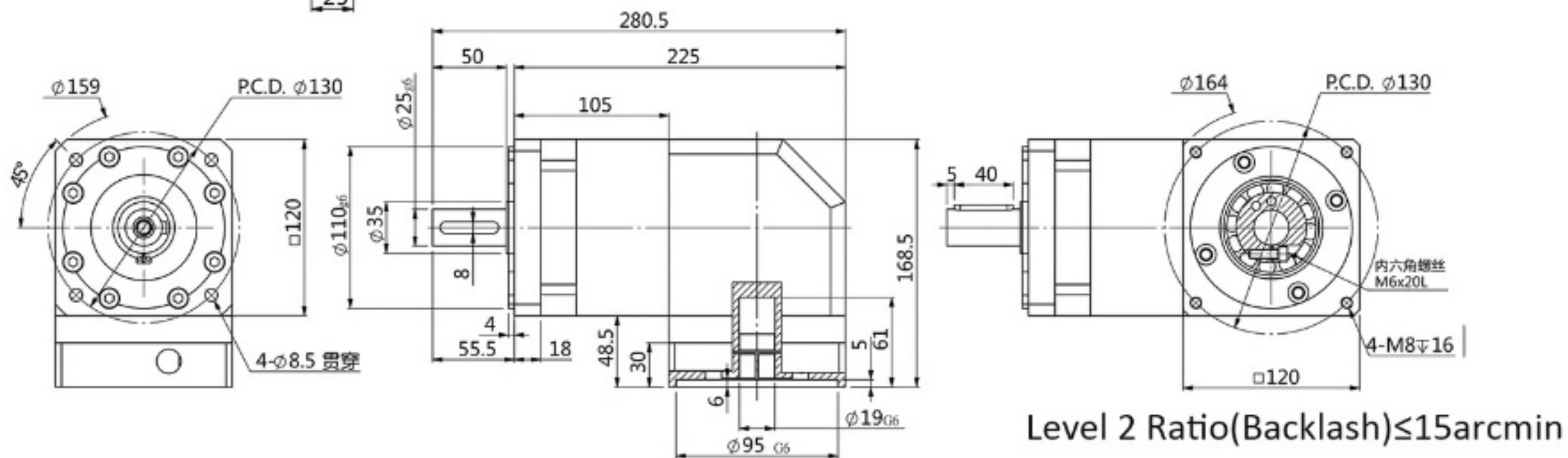
Level 2 Ratio(Backlash) ≤ 15 arcmin

**Level 2(Ratio)Drawing: 15:1; 20:1; 25:1; 30:1; 35:1; 40:1; 50:1; 70:1; 100:1**

# Straight Gear Right Angle Planetary Reducer for 110mm servo motor 19mm shaft

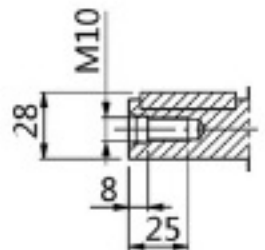
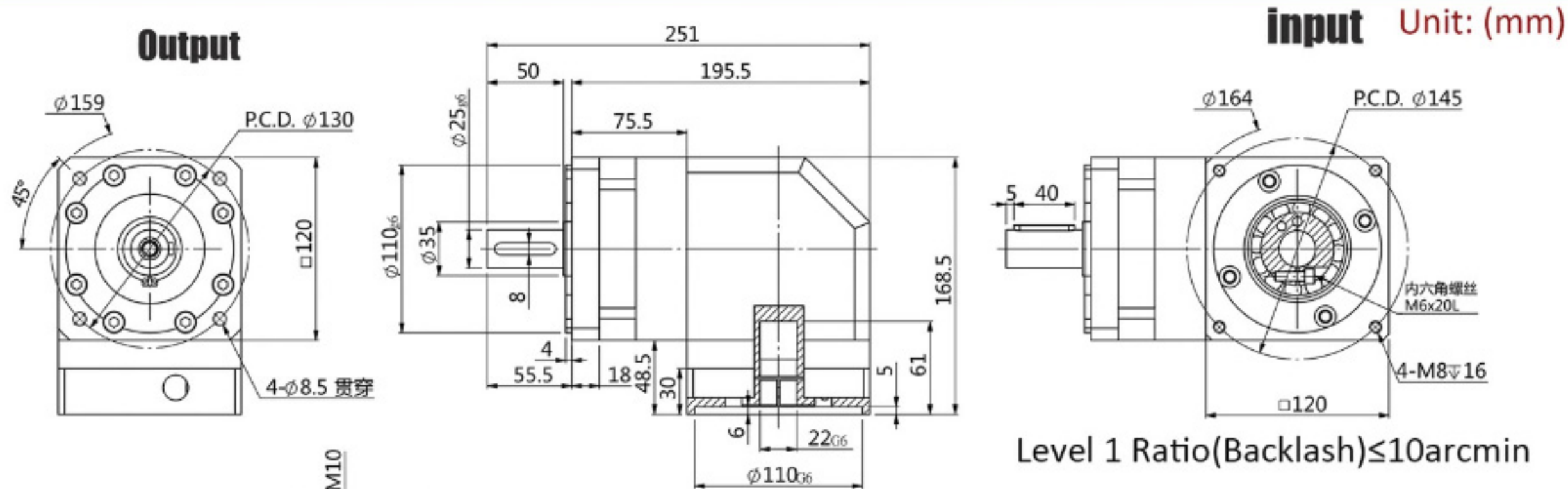


**Level 1 (Ratio) Drawing: 3:1; 4:1; 5:1; 7:1; 10:1**

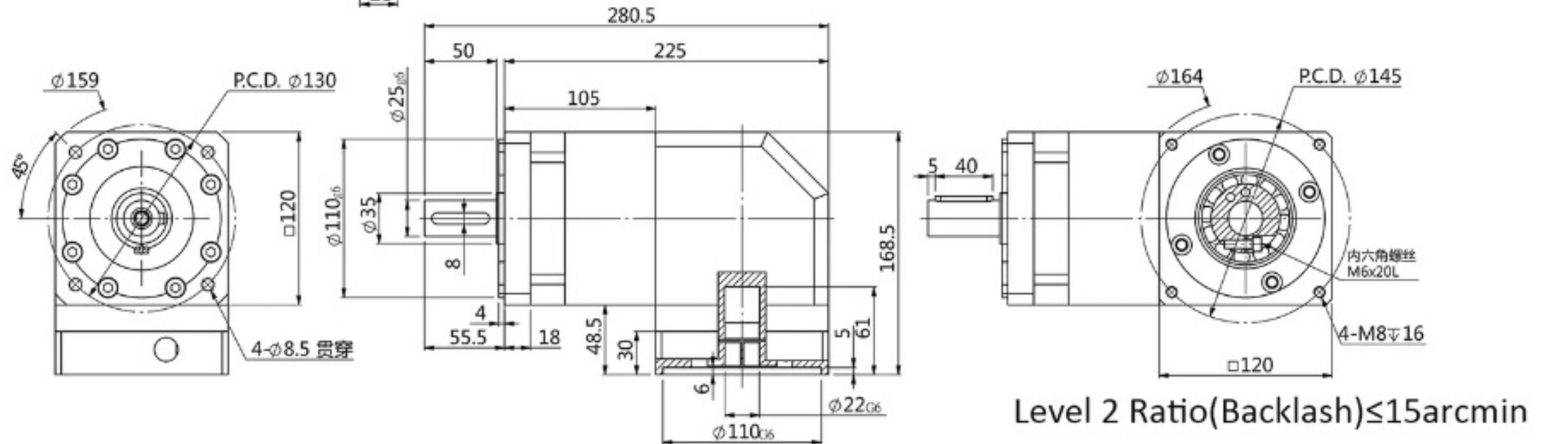


**Level 2 (Ratio) Drawing: 15:1; 20:1; 25:1; 30:1; 35:1; 40:1; 50:1; 70:1; 100:1**

# Straight Gear Right Angle Planetary Reducer for 130mm servo motor 22mm shaft

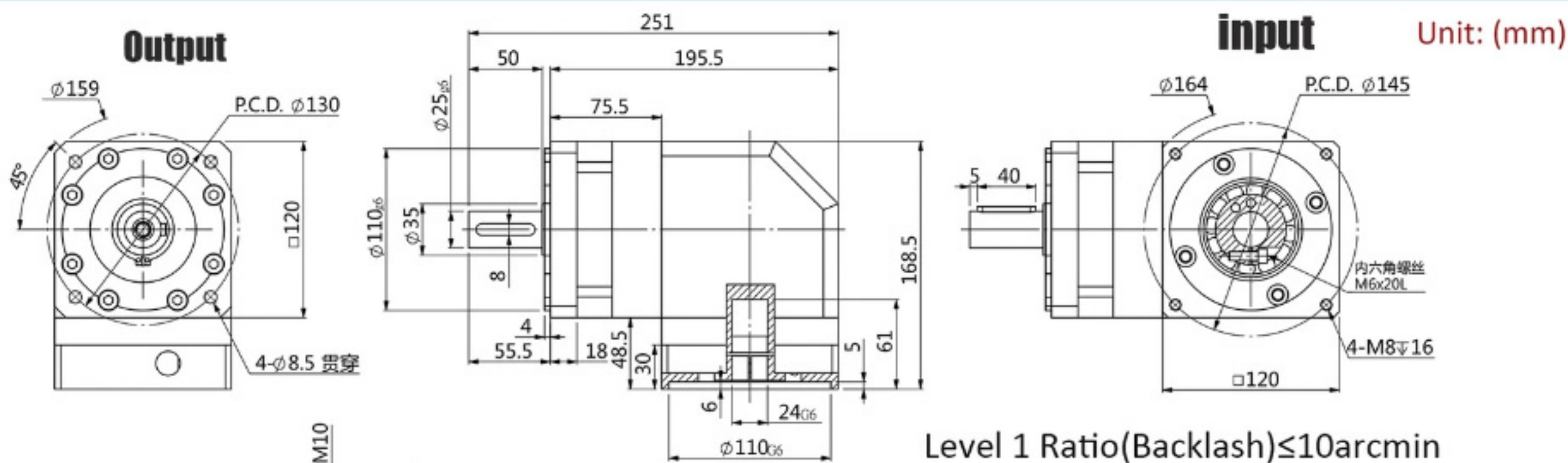


**Level 1 (Ratio) Drawing: 3:1; 4:1; 5:1; 7:1; 10:1**

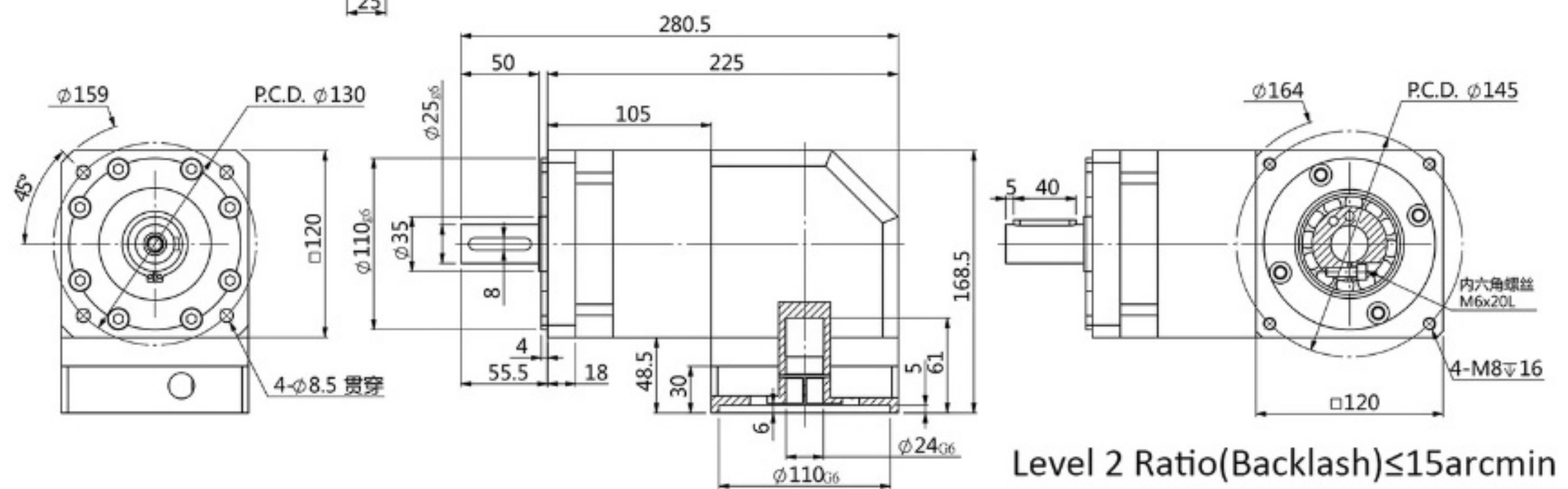


**Level 2 (Ratio) Drawing: 15:1; 20:1; 25:1; 30:1; 35:1; 40:1; 50:1; 70:1; 100:1**

# Straight Gear Right Angle Planetary Reducer for 130mm servo motor 24mm shaft



**Level 1(Ratio)Drawing: 3:1; 4:1; 5:1; 7:1; 10:1**



**Level 2(Ratio)Drawing: 15:1; 20:1; 25:1; 30:1; 35:1; 40:1; 50:1; 70:1; 100:1**